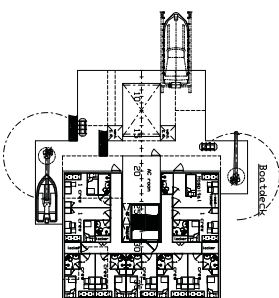
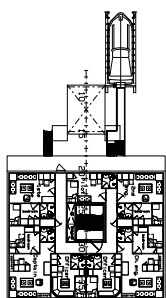
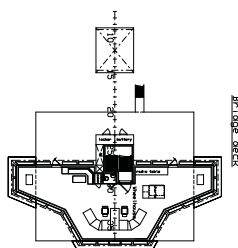
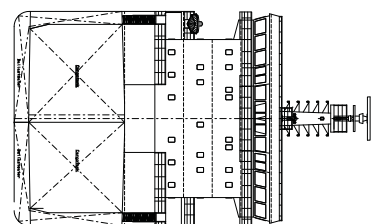
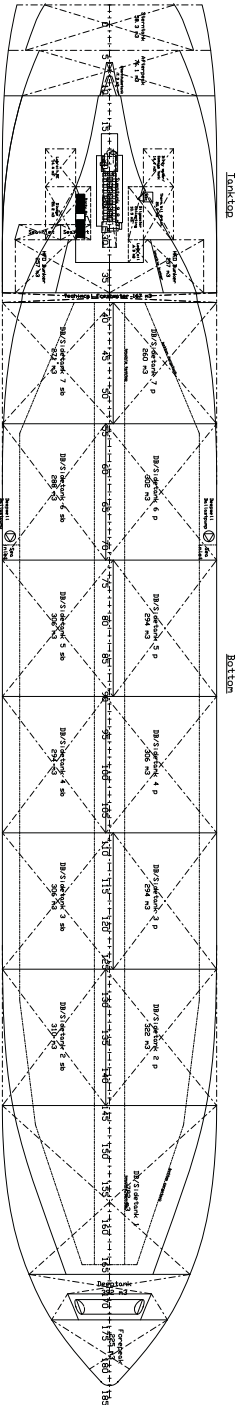
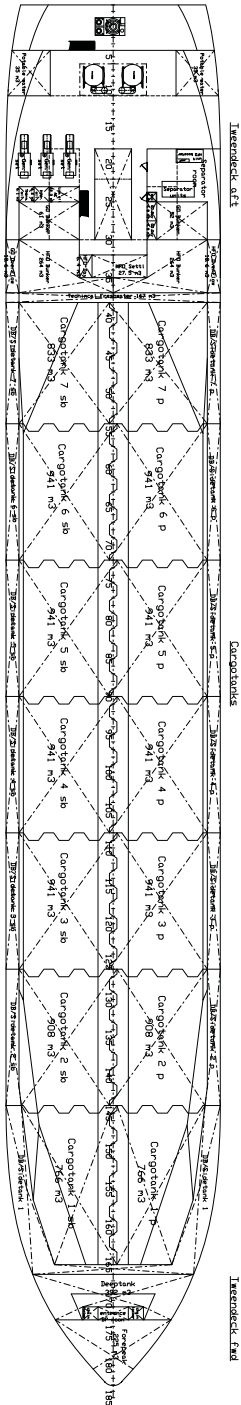
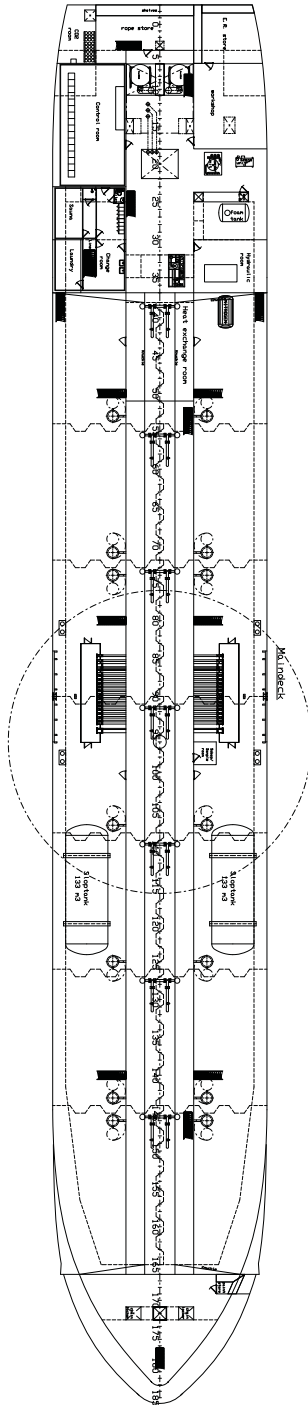
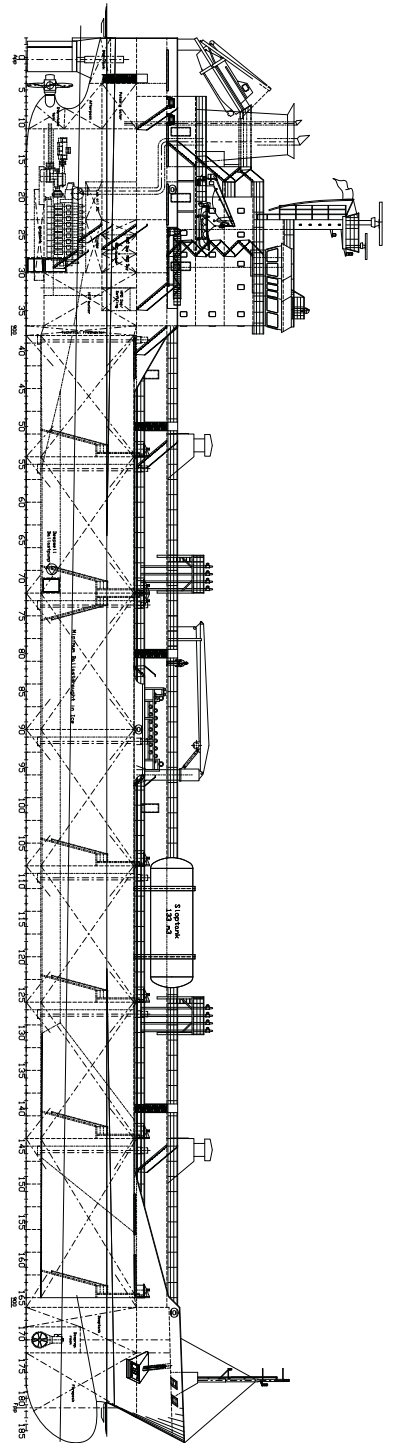


CHEMICAL TANKERS

11.240 DWT



CHEMICAL TANKERS

11.240 DWT

MAIN PARTICULARS

Length over all	129,85 m
Length betw. perp.	124,58 m
Breadth molded	19,80 m
Depth to maindeck	9,95 m
Draught, design	7,45 m
Deadweight (max. draught) appr.	11.240 t
Service Speed appr. (design draught, 90% MCR; 10% SM)	14,0 kn



Class: BV OIL AND CHEMICAL TANKER ESP, IMO TYPE II UNRESTRICTED NAVIGATION, ICE 1A, CLEAN SEA, CLEAN AIR, AUTUMS, AVM-APS, IG, MON-SHAFT, INWATERSURWAY, CARGO CONTROL, VCS

Complement: staff/pass. 16+1

TANK CAPACITIES

Heavy fuel oil	appr.	546 m ³
Marine diesel oil	appr.	123 m ³
Lubricating oil	appr.	26 m ³
Fresh water	appr.	240 m ³
Ballast/heeling water	appr.	4.945 m ³
Cruising range	appr.	10.000 sm



MAIN ENGINE

MAK		9M32C
MCR		4500 kW/600 rpm
Fuel Consumption (ISO at Service Speed)	appr.	177g/kWh
Controllable pitch propeller	155 rpm	
Bow thruster		500 kW

POWER SUPPLY

Diesel Generator	570 kW/900 rpm, 370 kW/900 rpm
Emergency Generator	116 kW/1800 rpm

CARGO TANK CAPACITIES

Cargo Tank 1P&S	766,30 m ³
Cargo Tank 2 P&S	907,80 m ³
Cargo Tank 3/4/5/6 P&S	941,00 m ³
Cargo Tank 7 P&S	833,30 m ³
Slop Tanks P&S	133,00 m ³
Total:	12.808,8 m ³



CHEMICAL TANKERS

11.240 DWT

