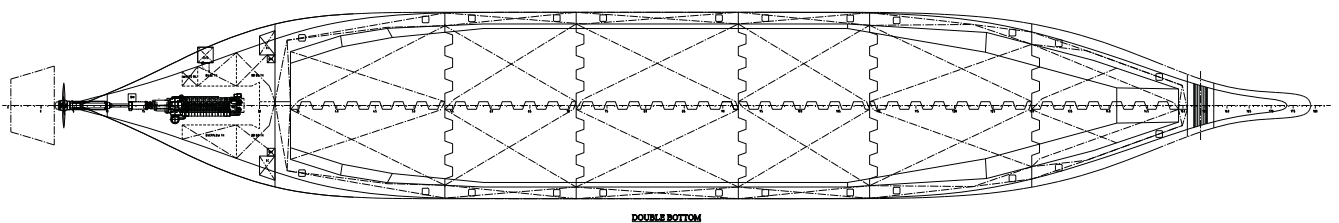
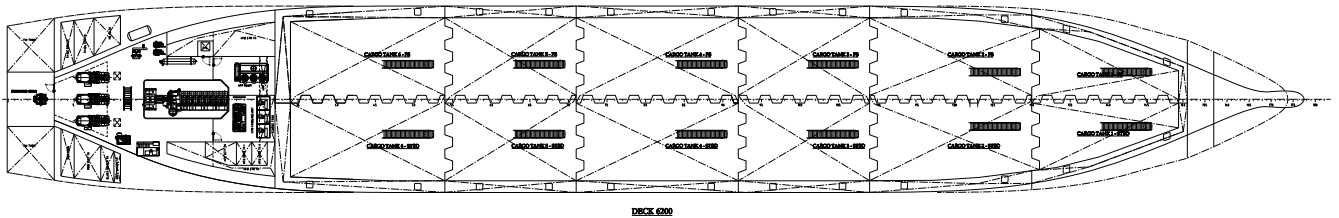
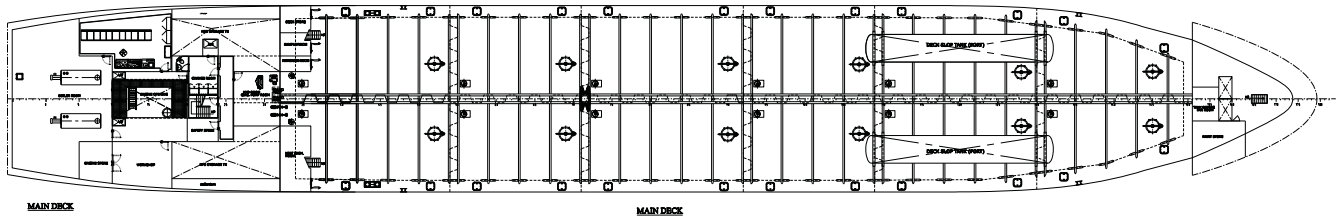
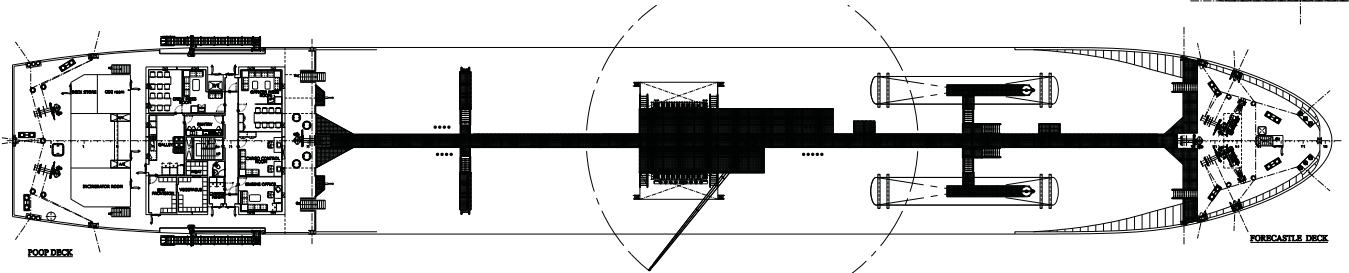
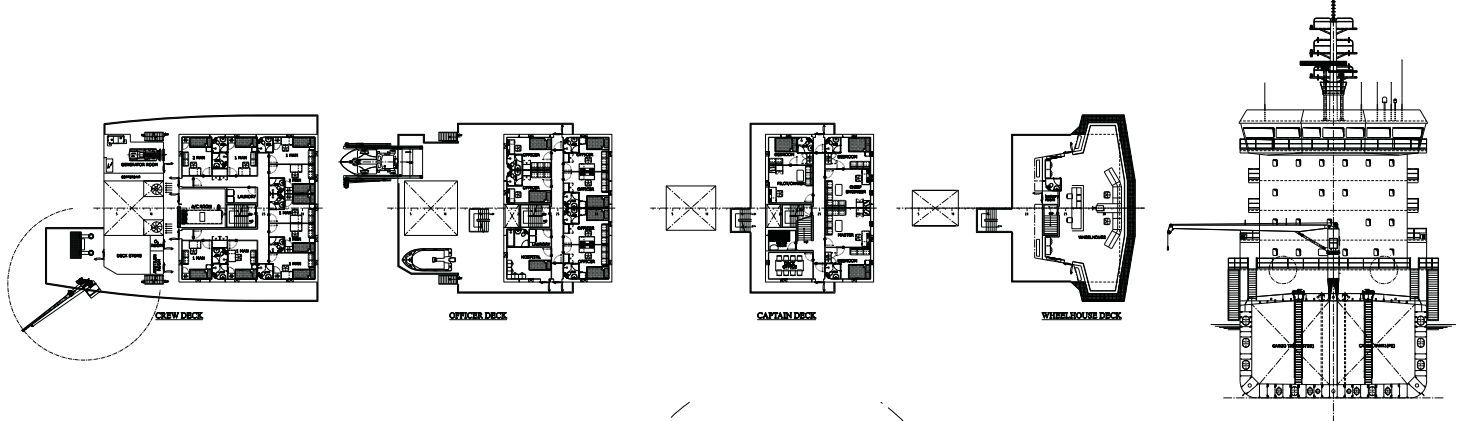
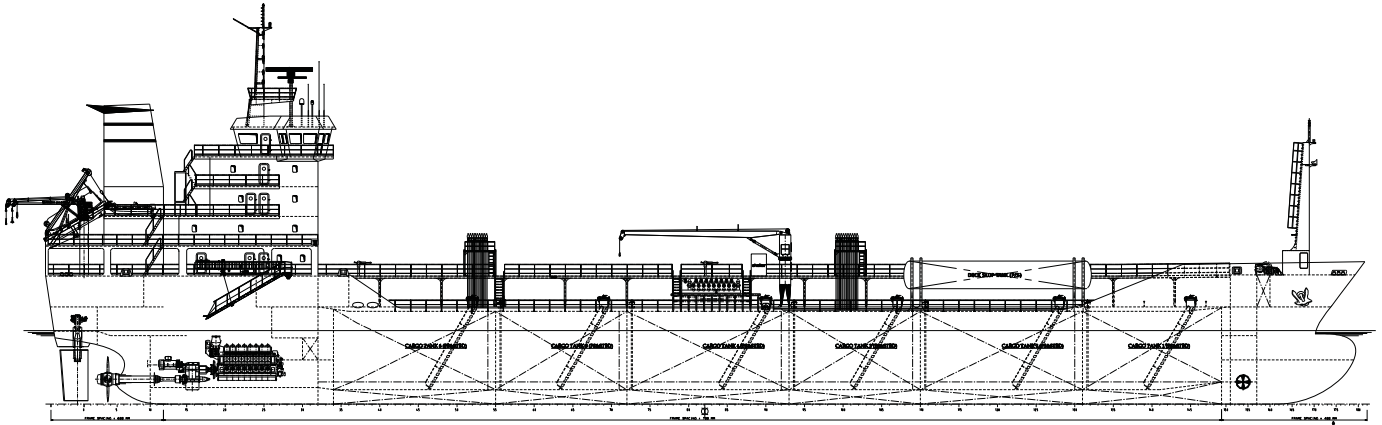


# CHEMICAL TANKERS

## 7000 DWT TANKER



# CHEMICAL TANKERS

## 7000 DWT TANKER

### MAIN PARTICULARS

Length over all appr.	119,10 m
Length betw. perp.	111,60 m
Breadth molded	16,90 m
Depth molded	8,40 m
Draught, design	6,65 m
Draught, scantling	6,72 m
Deadweight (max. draught) appr.	7000 t
Service Speed appr.	14,5 kn
(design draught, 85% MCR; 15% SM)	

Class: BV \*HULL\*MACHINERY, OIL AND CHEMICAL ESP, UNRESTRICTED NAVIGATION, \*AUT-UMS, CLEAN SEA, CLEAN AIR, MON SHAFT, ICE CLASS 1A, IG, USCG, MANOVR, COMF-NOISE, AVM-APS, IMO II, VCS, INWATERSURVEY.

Complement: staff/pass. 17+1

### TANK CAPACITIES

Heavy fuel oil	appr.	431 m <sup>3</sup>
Marine diesel oil	appr.	53 m <sup>3</sup>
Lubricating oil	appr.	29 m <sup>3</sup>
Fresh water	appr.	184 m <sup>3</sup>
Ballast/heeling water	appr.	3.124 m <sup>3</sup>
Cruising range	appr.	9.700 sm

### MAIN ENGINE

MAN		8L32/40
MCR		3840 kW/720 rpm
Fuel Consumption	appr.	42700 kj/kg
Controllable pitch propeller	145 rpm	
Bow thruster		350 kW

### POWER SUPPLY

3* Diesel Generator		485 kW/1800 rpm
Shaft Generator		1100 kW/1800 rpm

### CARGO TANK CAPACITIES

Cargo Tank 1 P	424 m <sup>3</sup>
Cargo Tank 1 S	424 m <sup>3</sup>
Cargo Tank 2 P	756 m <sup>3</sup>
Cargo Tank 2 S	756 m <sup>3</sup>
Cargo Tank 3 P	651 m <sup>3</sup>
Cargo Tank 3 S	651 m <sup>3</sup>
Cargo Tank 4 P	805 m <sup>3</sup>
Cargo Tank 4 S	805 m <sup>3</sup>
Cargo Tank 5 P	651 m <sup>3</sup>
Cargo Tank 5 S	651 m <sup>3</sup>
Cargo Tank 6 P	749 m <sup>3</sup>
Cargo Tank 6 S	749 m <sup>3</sup>
Slop Tank P	89 m <sup>3</sup>
Slop Tank S	77 m <sup>3</sup>
Total:	8238 m <sup>3</sup>



# CHEMICAL TANKERS

## 7000 DWT TANKER



# CHEMICAL TANKERS

## 7000 DWT TANKER

